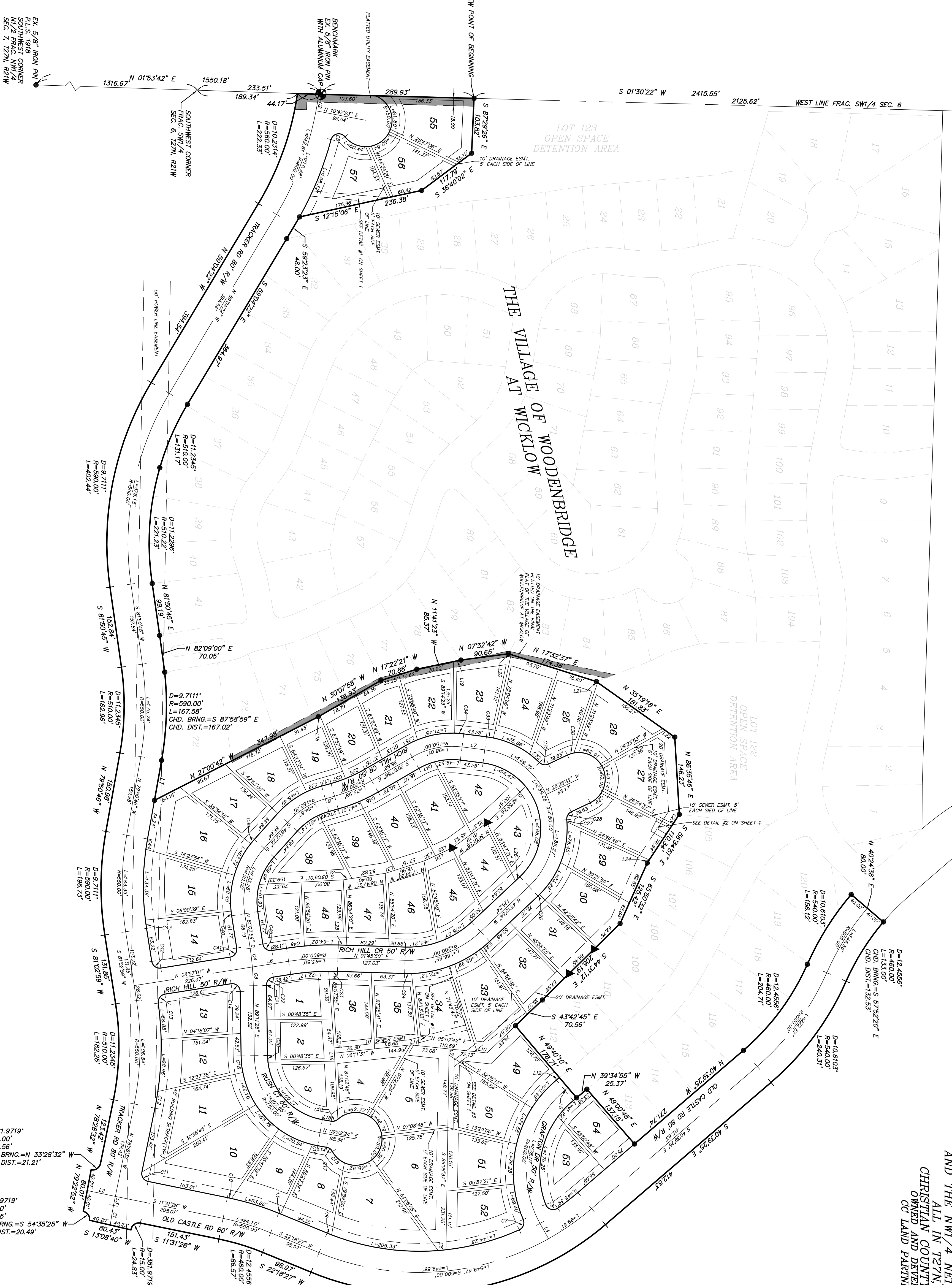


POINT OF BEGINNING  
EX. STONE  
NORTHWEST CORNER  
FRAC. SW 1/4 SEC. 6,  
T27N, R21W

FINAL PLAT  
**THE VILLAGE OF SUMMERHILL  
AT WICKLOW**  
LOCATED IN THE SW 1/4 SE 1/4 AND THE FRACTIONAL SW 1/4 OF SEC. 6  
AND THE NW 1/4 NE 1/4 OF SEC. 7  
ALL IN T27N, R21W  
CHRISTIAN COUNTY, MISSOURI  
OWNED AND DEVELOPED BY  
CC LAND PARTNERS LLC



LINE TABLE

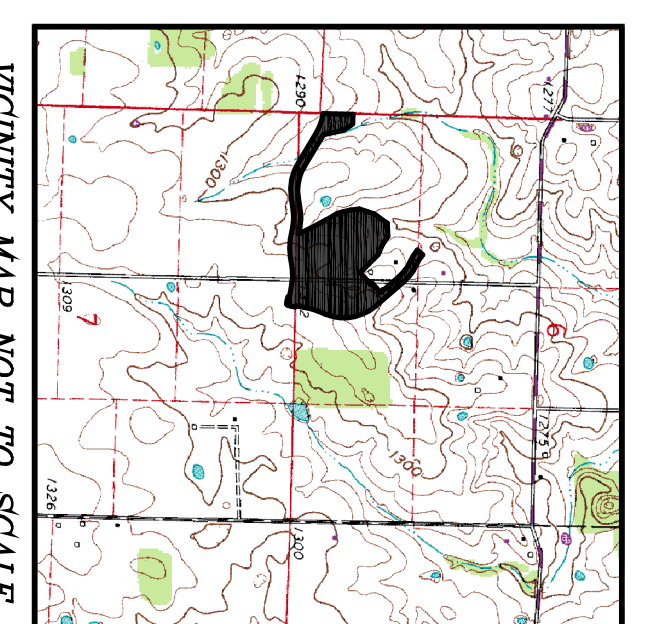
LINE	LENGTH	BEARING
C1	78.76	S 79°50'46" E
C2	37.60	S 80°00'00" E
C3	34.37	S 17°31'28" E
C4	33.69	S 80°45'28" W
C5	35.61	S 80°00'00" W
C6	33.09	N 39°34'55" W
C7	27.21	N 09°57'01" W
C8	43.26	S 07°18'19" W
C9	14.85	S 15°57'22" E
C10	8.25	S 89°55'42" E
C11	16.23	S 89°55'42" E
C12	7.55	S 39°34'55" E
C13	4.11	N 27°18'27" E
C14	17.11	N 09°52'24" E
C15	31.66	N 17°11'00" E
C16	18.46	S 15°57'22" E
C17	13.82	S 15°57'22" E
C18	32.02	N 30°07'58" W
C19	14.47	N 11°41'33" W
C20	5.07	N 73°43'37" E
C21	3.14	N 35°19'19" E
C22	22.42	N 35°19'19" E
C23	28.94	S 89°55'42" E
C24	13.82	S 89°55'42" E
C25	21.15	S 01°46'50" W
C26	11.64	S 43°10'54" E
C27	18.42	S 15°57'22" E
C28	68.44	N 24°16'14" W
C29	34.25	S 24°16'14" E
C30	18.32	N 15°00'00" W
C31	19.81	N 27°18'27" W
C32	16.89	N 09°47'21" W

CURVE TABLE

CURVE	LENGTH	RADIUS
C1	37.60	600.00'
C2	37.60	600.00'
C3	34.37	600.00'
C4	33.69	600.00'
C5	35.61	600.00'
C6	27.21	150.00'
C7	20.30	0.46'
C8	12.53	0.28'
C9	8.25	480.00'
C10	16.23	480.00'
C11	7.55	150.00'
C12	23.66	150.00'
C13	13.97	600.00'
C14	26.69	150.00'
C15	31.66	178.00'
C16	18.46	178.00'
C17	13.82	178.00'
C18	32.02	500.00'
C19	14.47	150.00'
C20	5.07	128.00'
C21	3.14	628.00'
C22	22.42	195.00'
C23	28.94	218.00'
C24	13.82	228.00'
C25	21.15	228.00'
C26	11.64	178.00'
C27	18.42	178.00'
C28	68.44	150.00'
C29	34.25	60.00'
C30	18.32	150.00'
C31	19.81	150.00'
C32	16.89	178.00'

AREA TABLE

LOT	SQ. FT.	ACRES
1	10,595	0.24
2	10,189	0.23
3	12,550	0.28
4	18,719	0.43
5	20,237	0.46
6	20,300	0.47
7	12,533	0.28
8	48,000	1.10
9	22,265	0.51
10	19,643	0.45
11	13,917	0.30
12	13,917	0.30
13	13,698	0.31
14	14,529	0.33
15	16,959	0.39
16	17,111	0.39
17	13,821	0.31
18	12,682	0.29
19	11,199	0.26
20	9,892	0.23
21	10,201	0.23
22	17,485	0.40
23	12,859	0.29
24	13,636	0.31
25	13,119	0.30
26	13,119	0.30
27	16,863	0.39
28	16,863	0.39
29	12,859	0.29
30	11,682	0.27
31	11,682	0.27
32	12,714	0.29
33	15,466	0.36
34	13,971	0.31
35	11,171	0.26
36	16,143	0.37
37	14,143	0.32
38	12,652	0.29
39	11,333	0.26
40	12,228	0.28
41	12,751	0.29
42	13,715	0.30
43	10,232	0.24
44	10,232	0.24
45	11,764	0.27
46	23,661	0.54
47	12,539	0.29
48	32,151	0.74
49	39,300	0.90
50	14,097	0.32
51	12,441	0.29
52	14,125	0.32
53	12,234	0.28
54	10,270	0.24
55	15,939	0.36
56	11,712	0.27
57	11,712	0.27
58	14,580	0.33
59	756,349	17.37
60	462,679	10.62
TOTAL	1,219,028	27.99



VICINITY MAP NOT TO SCALE

DECLARATION BY SURVEYOR

I HEREBY DECLARE TO CC LAND PARTNERS, LLC THAT THE INFORMATION CONTAINED HEREON IS BASED UPON AN ACCURATE SURVEY AND THAT I AM A LICENSED SURVEYOR IN THE STATE OF MISSOURI. I HAVE REVIEWED THE RECORDS OF THE MISSOURI BOARD FOR ARCHITECTS, PROFESSIONAL ENGINEERS AND LAND SURVEYORS AND BASED ON INFORMATION PROVIDED BY CC LAND PARTNERS, LLC. MONUMENTS AND PINS SHOWN AS SET WERE PLACED UNDER MY PERSONAL SUPERVISION. PHYSICAL EVIDENCE OF IMPROVEMENTS IS SHOWN FROM INFORMATION TAKEN BY VISUAL INSPECTION OF THE PREMISES. EASEMENTS SHOWN ARE BASED UPON INFORMATION PROVIDED BY OTHERS AND DO NOT REPRESENT MY OWN OPINION AS TO TITLE. THIS PLAT OF SURVEY IS AN INSTRUMENT OF SERVICE AND IS NOT TO BE USED BY ANYONE OTHER THAN THOSE TO WHOM IT HAS BEEN GRANTED UNLESS IT HAS BEEN UPDATED AND RE-CERTIFIED BY THE UNDERSIGNED.

EDDIE D. WICKET P.L.S. 2190  
MICK E. HOUSEMAN P.L.S. 2008019222

CC LAND PARTNERS, LLC

WOLFE SURVEYING, INC.  
EDDIE D. WOLFE P.L.S. 2190  
JACK E. HOUSEMAN P.L.S. 2005078222

3000 Green Mountain Drive Suite 102-103 Benson, MO 65616  
Phone: 417-331-8820 Fax: 417-331-9101

SHEET: 2 OF 2  
DATE: 05-04-06  
DWG: #452-P42  
REV

**LEGEND**

- EX. 1/2" IRON PIN
- EXISTING STONE
- △ CORNER MONUMENT
- P.C., P.T., P.L.
- ▲ RIGHT-OF-WAY MARKER

**BASE OF BEARING**  
WEST LINE, FRAC. SW 1/4 SEC. 6  
CHD. BRNG. = S 01°30'22" W

**GRAPHIC SCALE**  
( IN FEET )  
1 inch = 100 ft.



EX. 5/8" IRON PIN  
P.L.S. 1918  
SOUTHWEST CORNER  
FRAC. SW 1/4 SEC. 6,  
T27N, R21W